



HUNTERS[®]
HERE TO GET *you* THERE

3 Beechdale Road, Consett, DH8 6AY

HUNTERS[®]
HERE TO GET *you* THERE

3 Beechdale Road, Consett, DH8 6AY

Asking Price £129,950

For sale is this neutrally decorated semi-detached house, an ideal property for families. The property is well-placed, with convenient public transport links, nearby schools, and local amenities in close proximity, ensuring everything you need is readily available.

The house boasts three bedrooms, two of which are spacious doubles, and the third a generous single. Each bedroom offers a tranquil setting for relaxation after a long day. The property features one bathroom, fitted with a bath and shower, offering both functionality and comfort for its future residents.

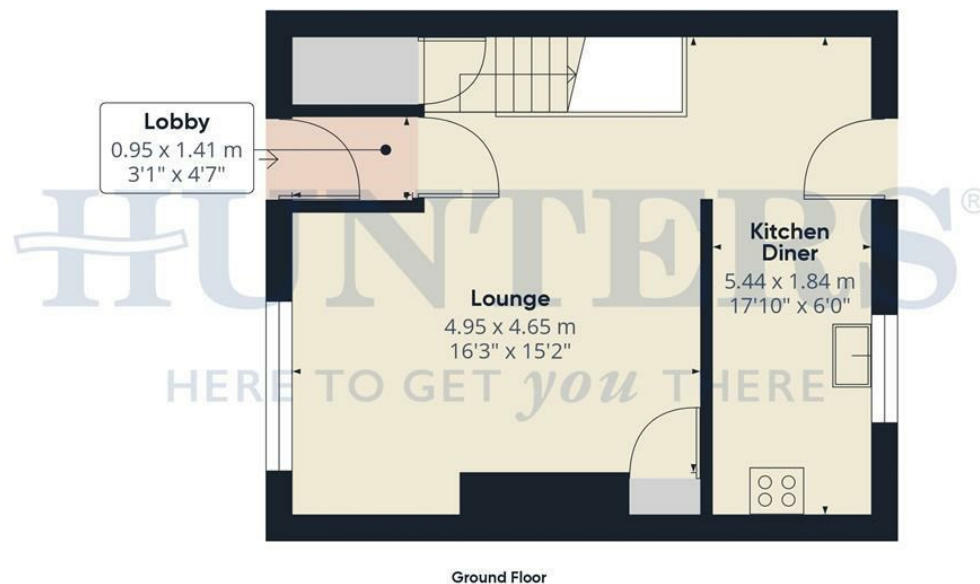
A standout feature of this home is the open-plan kitchen which enjoys an abundance of natural light. It is well-designed to include a dining space, making it a sociable area where you can enjoy meals with family and friends.

The single reception room is a true highlight, being open-plan with a large window that allows natural light to flood in, and a modern fireplace that adds to the room's character. The wood floors enhance the neutral décor and add warmth to the space.

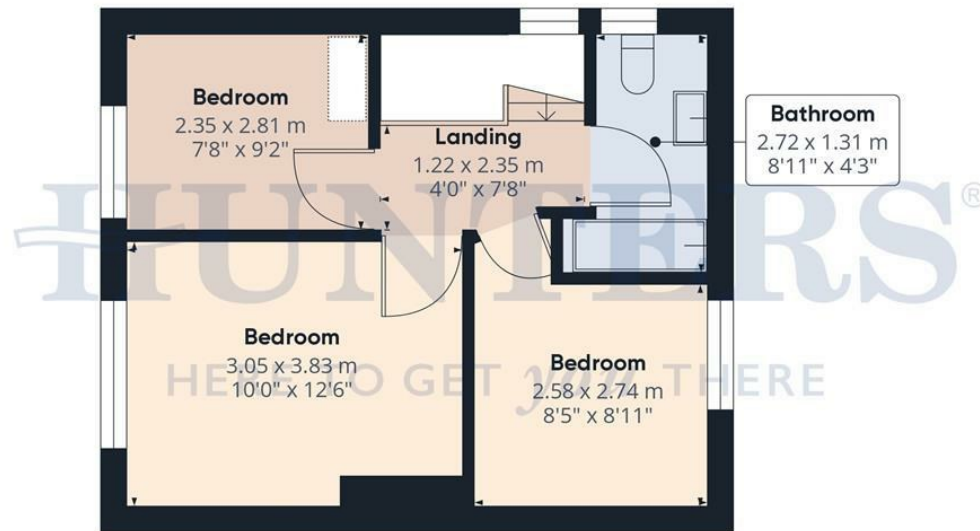
Externally, the property does not disappoint. The front features a grassed lawn and ample parking for multiple vehicles. The rear hosts a large garden, perfect for those who love outdoor spaces, and complete with a shed for extra storage.

With its open-plan design and garden, this house offers unique features that make it a perfect family home. This property is a must-see. Book a viewing today and explore its potential for yourself.

Hunters Consett 15 Victoria Road, Consett, DH8 5BQ | 01207 593838
consett@hunters.com | www.hunters.com



Ground Floor



Floor 1

HUNTERS
HERE TO GET *you* THERE

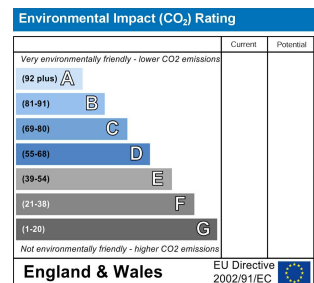
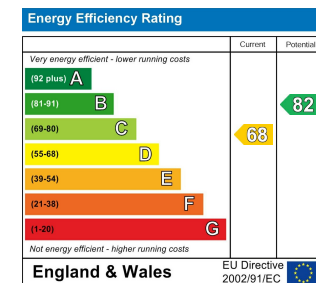
Approximate total area⁽¹⁾
66.77 m²
718.7 ft²

(1) Excluding balconies and terraces

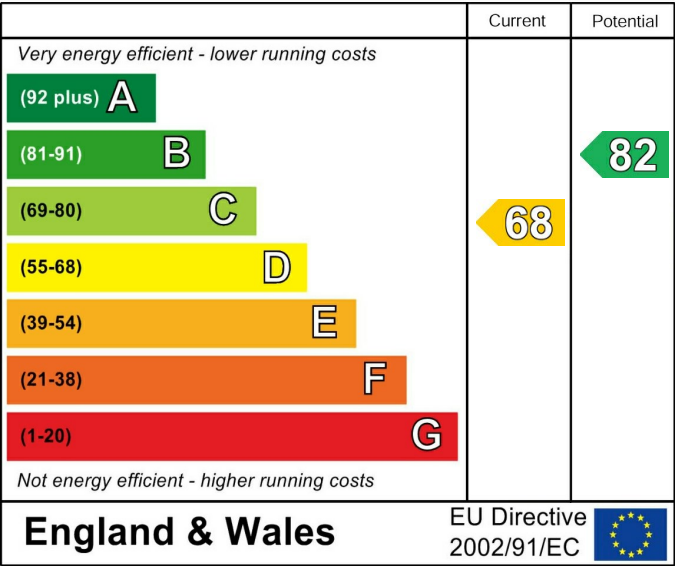
While every attempt has been made to ensure accuracy, all measurements are approximate, not to scale. This floor plan is for illustrative purposes only.

Calculations are based on RICS IPMS 3C standard.

GIRAFFE360



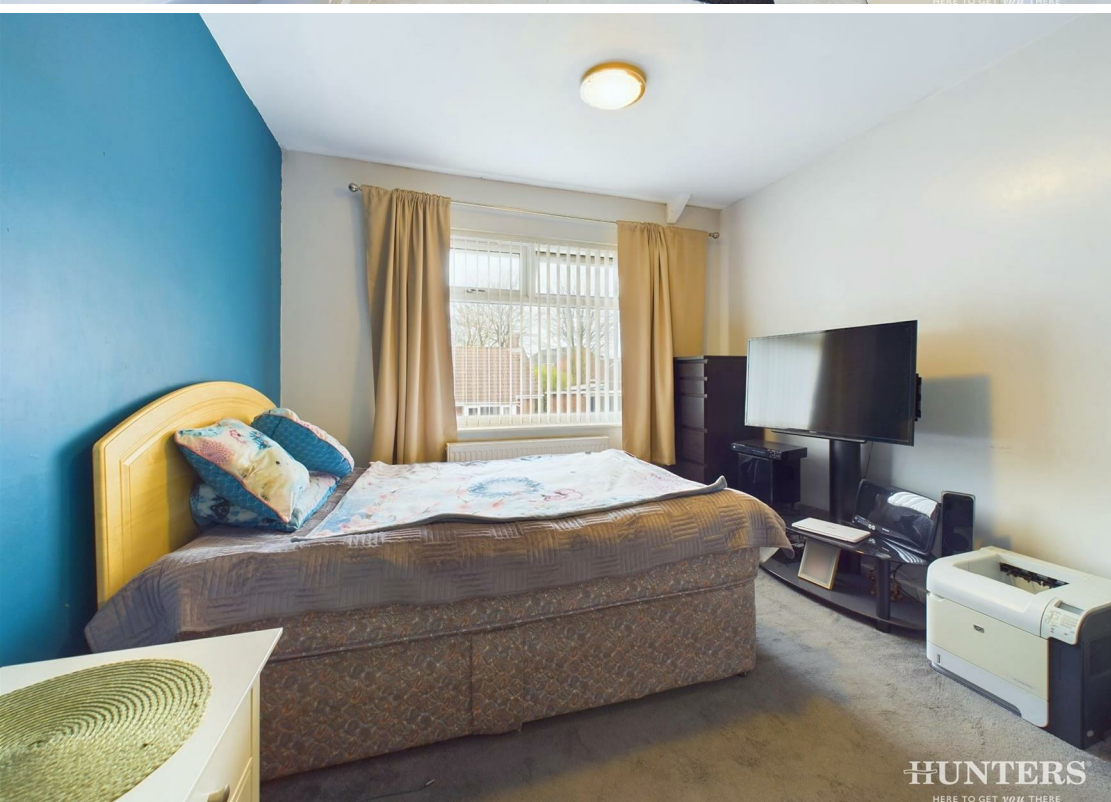
Energy Efficiency Rating



These particulars are intended to give a fair and reliable description of the property but no responsibility for any inaccuracy or error can be accepted and do not constitute an offer or contract. We have not tested any services or appliances (including central heating if fitted) referred to in these particulars and the purchasers are advised to satisfy themselves as to the working order and condition. If a property is unoccupied at any time there may be reconnection charges for any switched off/disconnected or drained services or appliances - All measurements are approximate. If you are thinking of selling your home or just curious to discover the value of your property, Hunters would be pleased to provide free, no obligation sales and marketing advice. Even if your home is outside the area covered by our local offices we can arrange a Market Appraisal through our national network of Hunters estate agents.











HUNTERS®

HERE TO GET YOU THERE